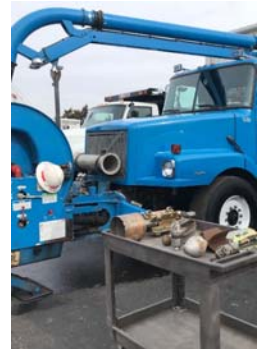
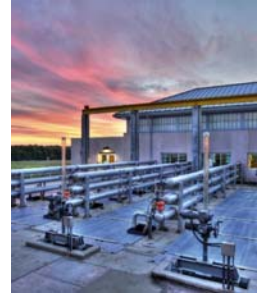


# UTILIZING ASSET MANAGEMENT DATA TO DRIVE LONG-TERM REPAIR AND REPLACEMENT (R&R) PLANNING

Jessica Dzara, CPPM CF  
October 8, 2020



1

## ASSET MANAGEMENT PROGRAM FOCUS

Data-Based Decision Making



Data Quality



Increasing Reliability



Product Research



Asset Risk



Condition Assessments



Asset Preservation



Strategic Planning



2

## R&R PLANNING OBJECTIVES

- Establish a framework for long-term R&R.
- Ensure sustainable rate planning.
- Promote strategic, data-based decision making.

3

## SCOPE SUMMARY



Linear  
Assets



Facilities and  
Support Assets



Partner Utility  
Agreements

Portfolio of Capital Assets

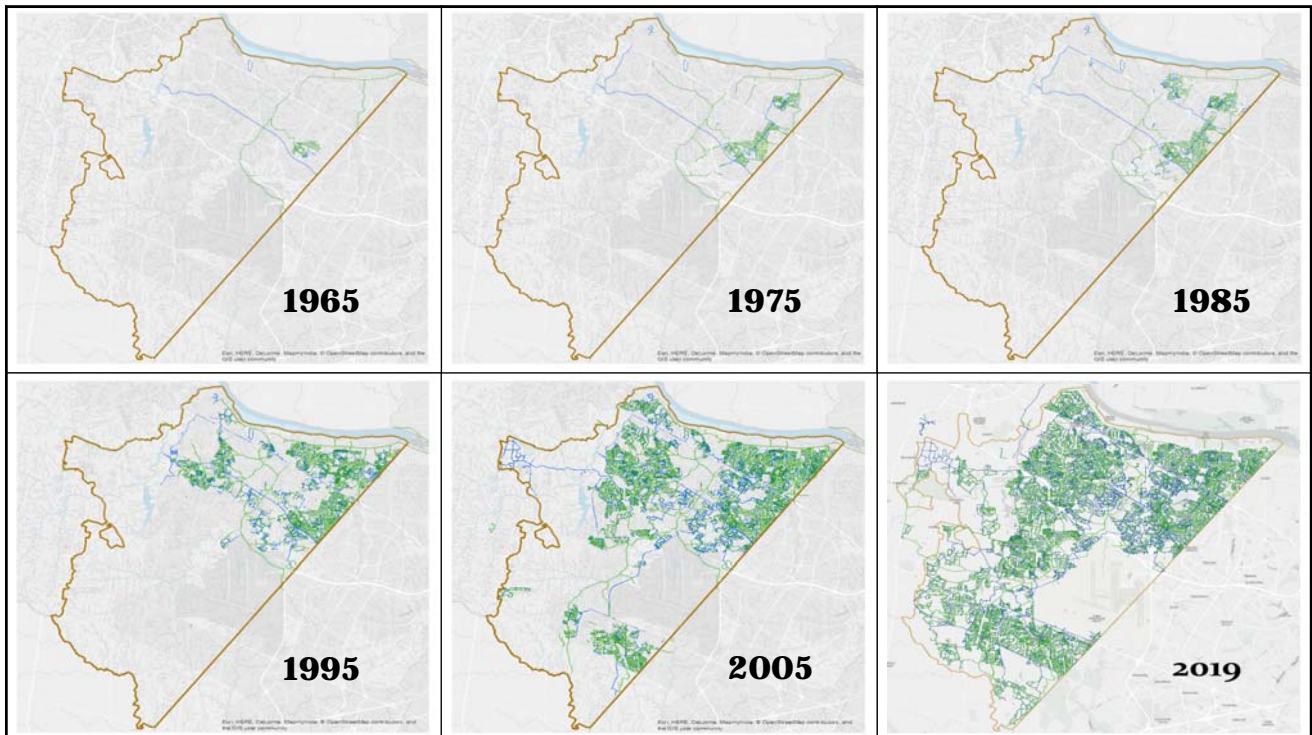
4

# LINEAR PIPE CONSIDERATIONS

- + Pipe Age
  - + Pipe Material
  - + Useful Life
  - + Condition Data
  - + Cost to Rehab or Replace
- 
- ≡ R&R Projection

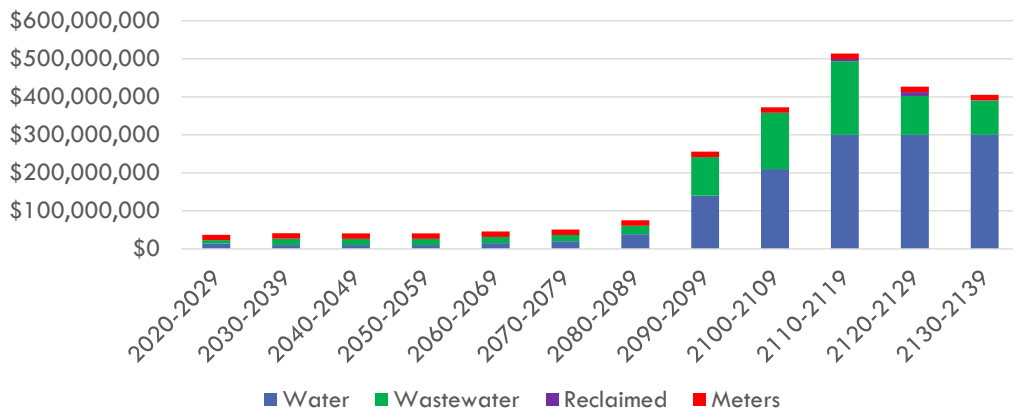


5



6

## LINEAR ASSET R&R SUMMARY



7

## FACILITIES AND SUPPORT ASSETS



Wastewater Facilities |  
Conveyance and Treatment



Water Facilities |  
Conveyance and Treatment



Administrative Facilities



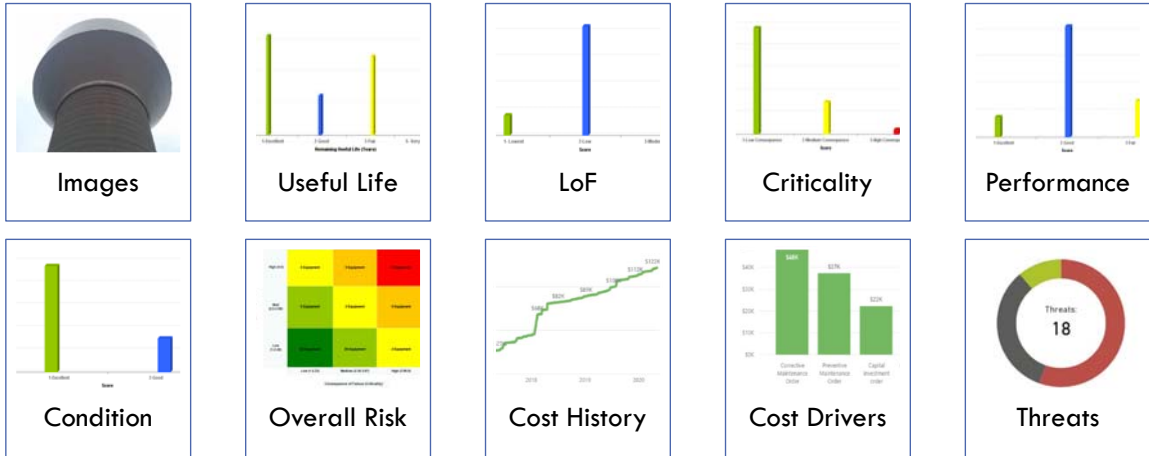
Fleet



Information Technology

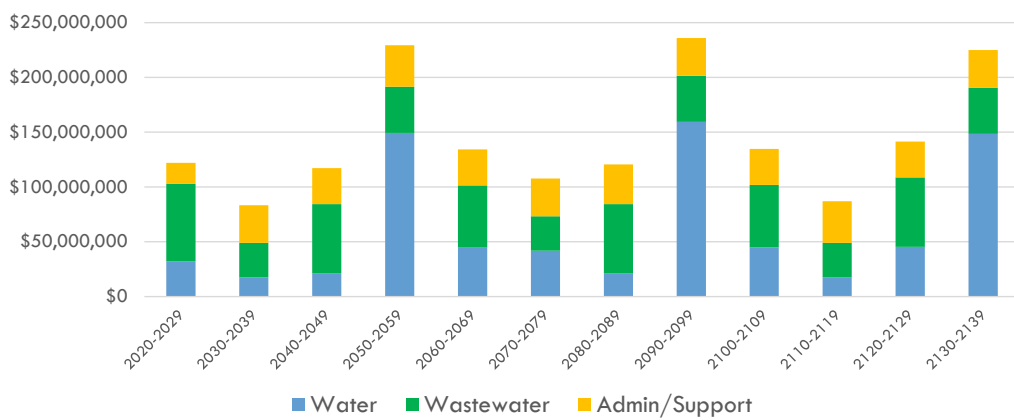
8

# FACILITY ASSESSMENT DATA



9

# FACILITIES AND SUPPORT ASSETS R&R SUMMARY



10

# PARTNER UTILITY AGREEMENTS



Drinking Water Capacity Agreements



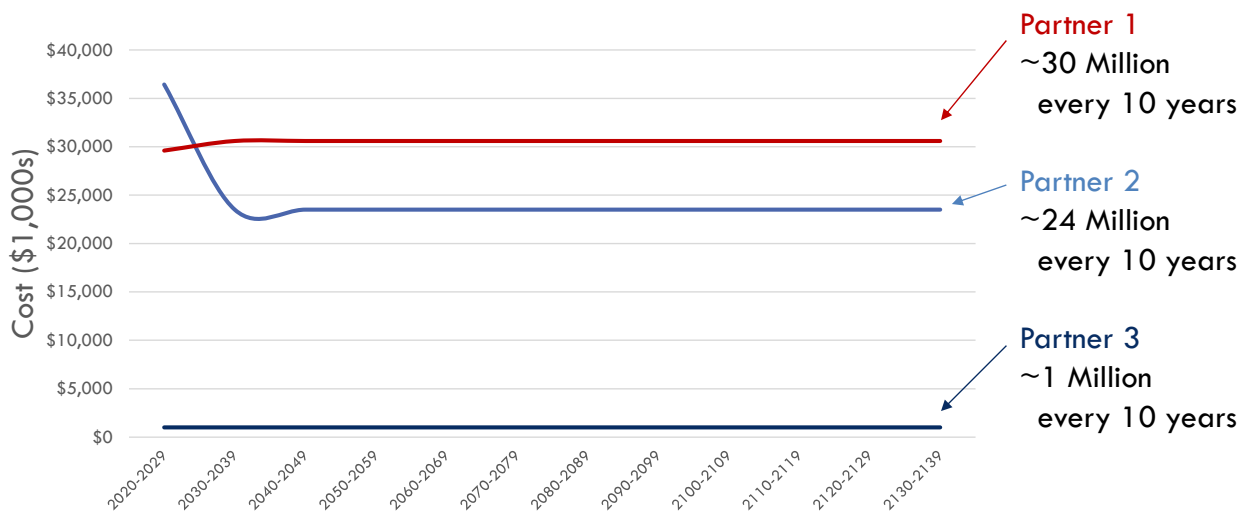
Wastewater Treatment Capacity Agreements



R&R Responsibilities for Shared Assets

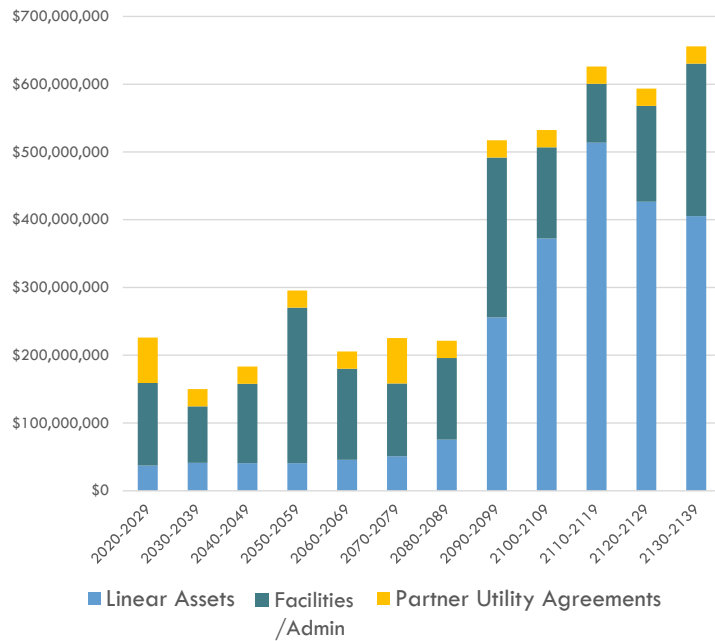
11

## PARTNER UTILITY AGREEMENTS



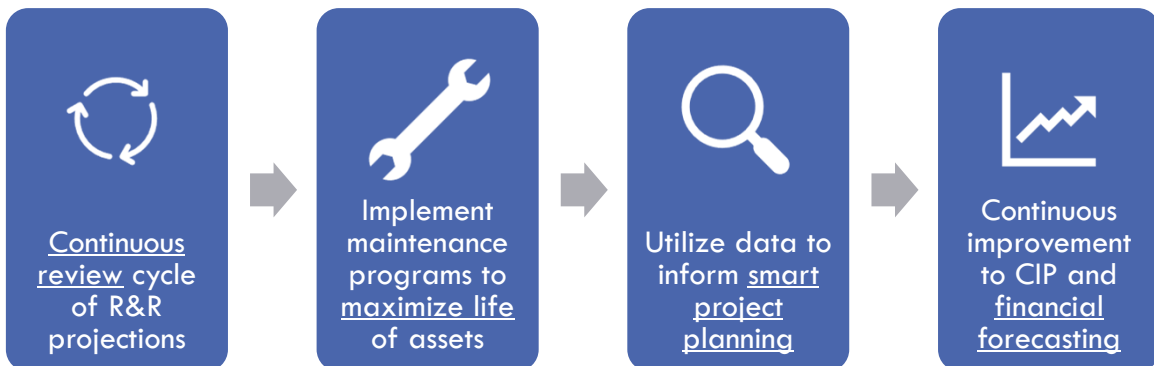
12

# COMPOSITE R&R ROADMAP



13

## MOVING FORWARD



14

# QUESTIONS

Jessica Dzara  
Asset Management Program Director  
Loudoun Water  
JDzara@loudounwater.org

