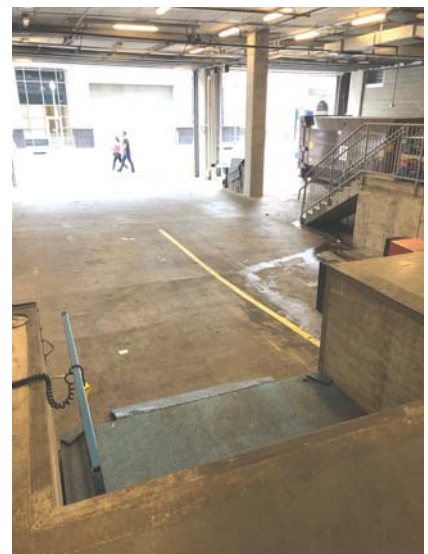


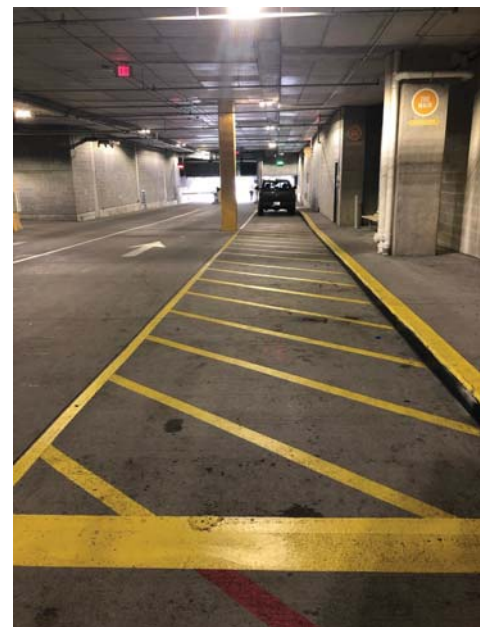


**Option 1:** Loading Dock—2 Bays on Right. Lift is in the Right side Bay. Stairs next to Left Bay. If the bay doors are not open, enter glass doors to immediate right for Security.



**Option 2:** Parking Deck Load Zone Area

Enter the parking deck, make a slight U turn into the Loading Zone area marked Yellow. Unload here and then park. The Hotel entrance is right there. Some Bell assistance here. Note if just unloading, you will have to pay the hourly rate.



**Option 3:** Parking Deck. Self Park on any level and take the elevator to level P3. You will see the Door to enter the Hotel Lobby next to the P3 elevator— enter Lobby, turn right to the main elevators to the 4th Floor.

